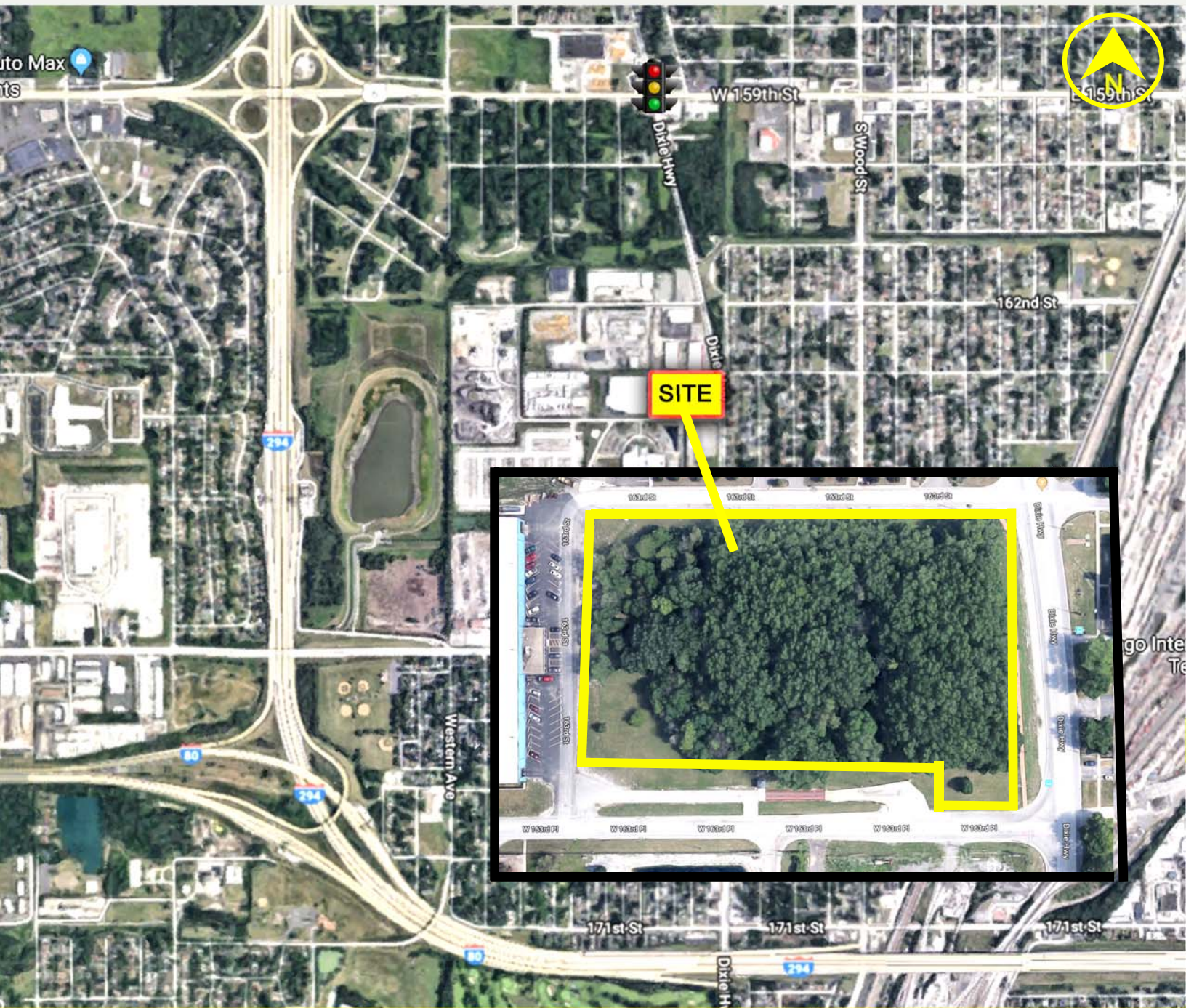


For Sale

Land Parcel

±4.3 Acres



2100 W. 163rd Pl., Markham, Illinois 60428

- ±4.3 Acres
- Over 400' Dixie Hwy Frontage
- Minutes to I-294, I-57, I-80
- Utilities to Site
- Class 6/8 Tax Available
- PIN 29-19-308-005
- **Asking: \$600,000 (i.e. \$3.20 psf)**



For Additional Information Contact
Lawrence K. Hanley
630-584-3666
lkh@midwestcre.com